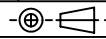
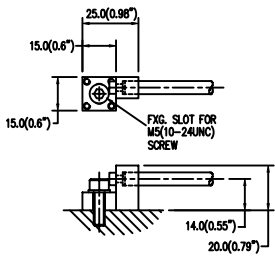
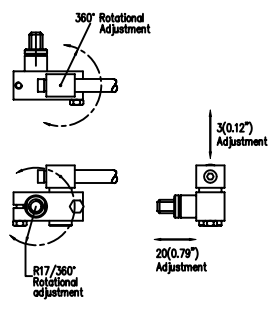


DRAWING NUMBER 316-82010 REV. ISS. 0

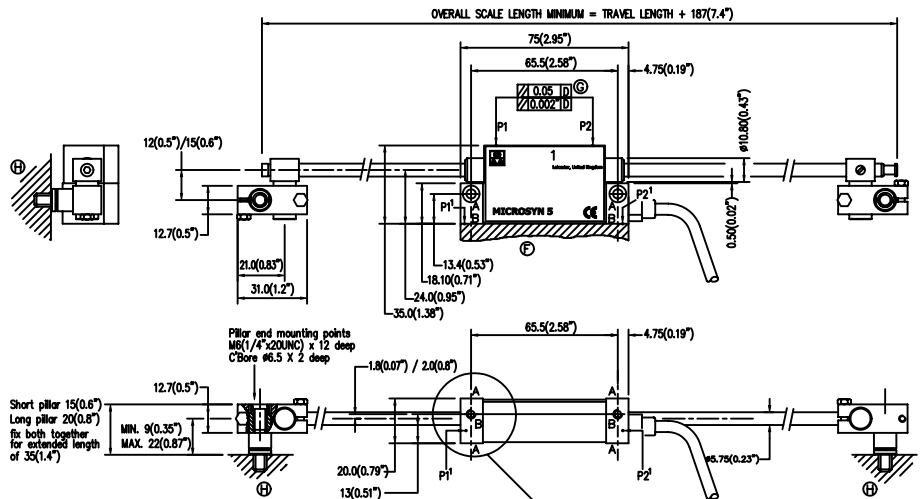
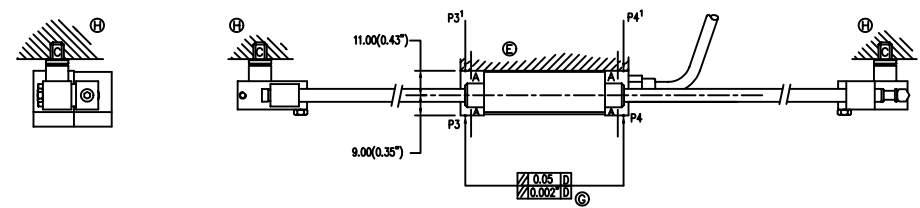
DO NOT SCALE  THIRD ANGLE PROJECTION IF IN DOUBT ASK



SINGLE END SCALE MOUNTING
Left and right hand versions available.



SCALE MOUNTING BRACKET ADJUSTMENT



Short pillar 15(0.6)
Long pillar 20(0.6)
fix both together for extended length of 35(1.4)

Mountings "A"
#4.2 THRO' & C'BORE #7.5 x 4.5 DEEP
each side of housing to accept
M4(8-32UNC) cap head screws.

- A - Encoder head mounting points 2off for M4(8-32UNC) cap head screws (clearance holes through).
- B - Encoder head mounting points 2off for M4 screws (thread depth B).
- C - Scale pillar mounting studs M6 x 10 (1/4-20UNC)-(use spacer washer as required).
- D - Machine Guideway.
- E/F - Encoder head mounting faces.
- G - indicating parallel alignment required between encoder head and axis travel.
- H - Scale end mounting points to machine bed.
- P - Installation alignment points.

DIMENSIONS - mm (ins")

FOR FURTHER INFORMATION REFER TO INSTALLATION MANUAL

REV. ISS. DATE		C.N. No. ALTERATION		REV. ISS. DATE		C.N. No. ALTERATION		REV. ISS. DATE		C.N. No. ALTERATION	
TITLE SALES LITERATURE DRAWINGS for MICROSYN ANALOGUE				MATERIAL / FINISH				SCALE 1=1		UNLESS OTHERWISE STATED - DIMENSIONS ARE IN MM.	
DRAWN J.DRIVER 18-08-04				CHECKED				SHEET 1 OF 1		DRAWING NUMBER 316-82010	
APPROVED				Leicester				NEWALL England		REV. ISS. 0	