

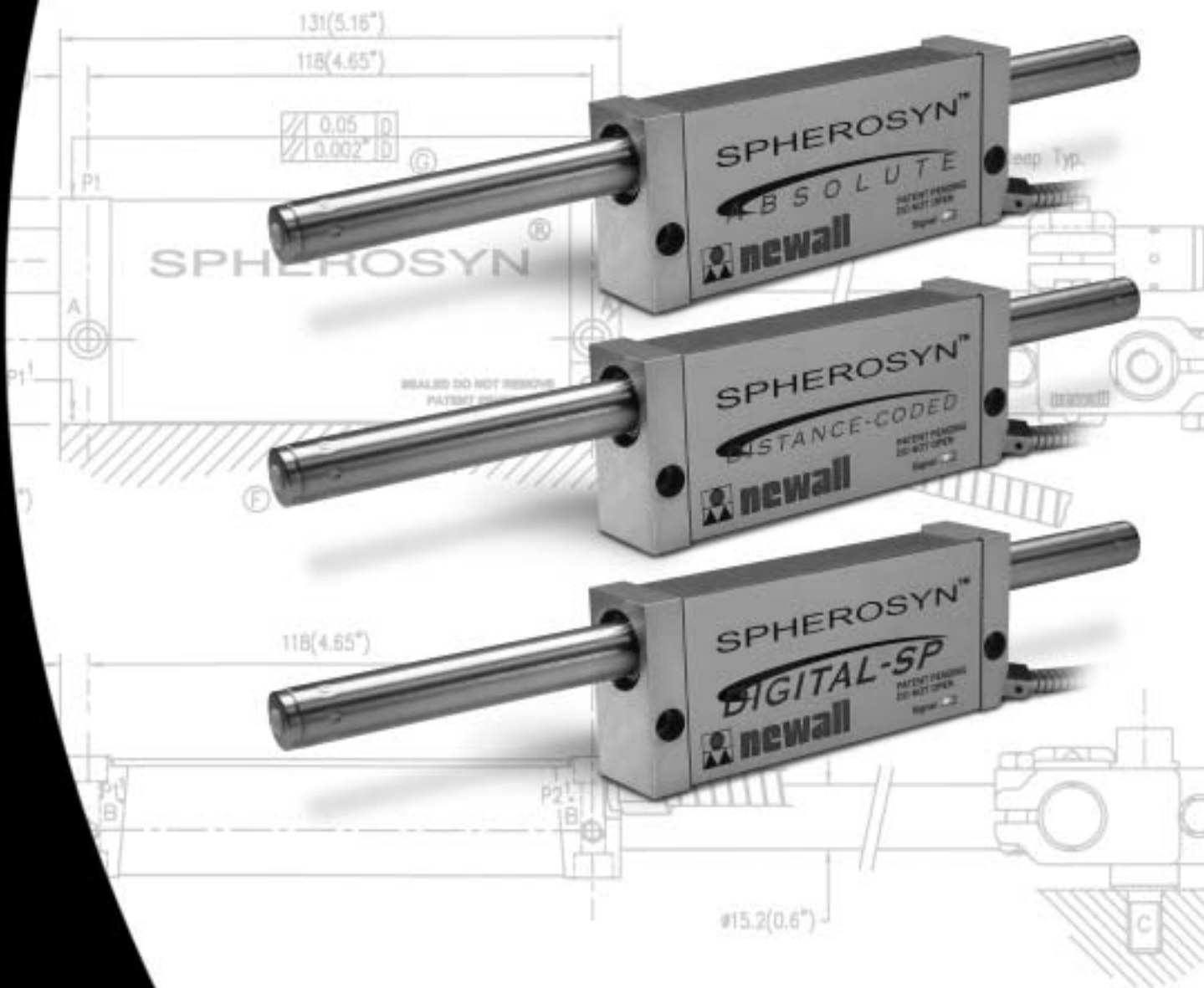
NEWALL

Spherosyn

Absolute (SHG-A_)

Distance Coded (SHG-TC)

Digital SP (SHG-TS & SHG-VS)

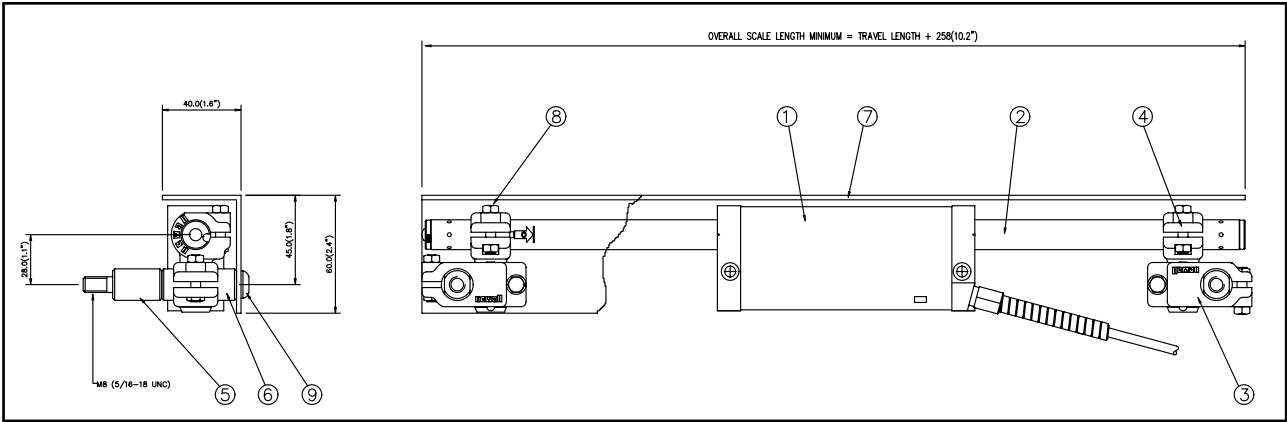


Encoder Hardware Installation Manual

CONTENTS

1.0	Technical Specification	1
1.1	Bracketry	2
1.2	Preparation	2
1.3	Warnings.....	2
2.0	Encoder Assembly	3
3.0	Mounting The Reader Head	3
4.0	Mounting The Scale	4
4.1	Double End Mounting	4
4.2	Single End Mounting.....	6
4.3	Scales in Excess of 2.5 Meters	7
5.0	Fitting The Scale Guard	9
6.0	Cable Routing	10
7.0	Final Check	10
	Appendix A - Scale Bracket Mounting Options	11
	Appendix B - Dimensional Drawing	12

2.0 SPHEROSYN™ ENCODER ASSEMBLY



Item	Description	Item	Description
1	Spherosyn™ Reader Head	6	Support Pillar Long
2	Spherosyn™ Scale	7	Scale Cover
3	Scale Support Link	8	M5 Nut
4	Scale Anchor Pin	9	M8 x Socket Button Head
5	Support Pillar Short		

3.0 MOUNTING THE READER HEAD

3.1 Spherosyn™

Mount the reader head together with its bracket(s) to the machine and secure the assembly parallel with axis travel to within +/-0.05mm (0.002"), (Refer to Figure 3.1).

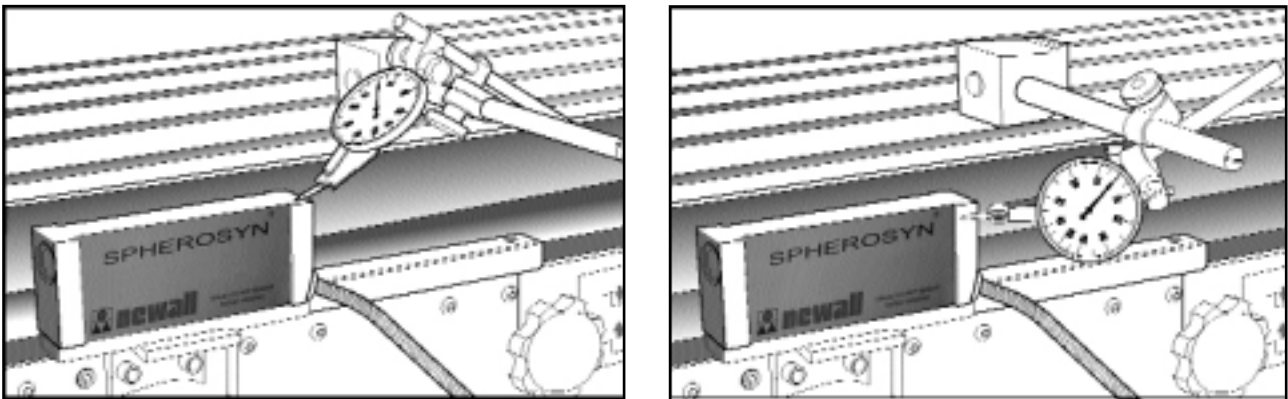


Figure 3.1 - Alignment of the Spherosyn™ reader head

Final adjustments can be carried out by use of laminated shims, which are included with each transducer assembly. Each layer of shim is equivalent to 0.05mm (0.002").

Mounting the Scale

A maximum of two support pillars may be screwed together to allow for sufficient adjustment of the scale. If two pillars are insufficient to enable the scale to be mounted, then additional brackets will be necessary. These brackets must be sufficiently rigid to eliminate any axial movement of the scale.

Loosely fit the support link/pin assembly onto the pillar and pass the scale through the reader head and into the support pin. While gently sliding the scale forward and back 25 - 50mm (1 - 2") through the support pin, carefully tighten the hex screws on the support link, ensuring that the scale slides smoothly through the reader head and into the support pin. If any interference is detected then fully loosen the hex screws on the support link and repeat this step.

Note: Do not force the scale through the Support Pin.

IMPORTANT WARNING:

THE CENTER LINE BORE OF THE READER HEAD MUST BE IN DIRECT ALIGNMENT WITH THE CENTER LINE BORE OF THE SUPPORT PIN. PERMANENT DAMAGE TO SCALE AND/OR ERRONEOUS READER WILL OCCUR IF THIS WARNING IS NOT FOLLOWED (REFER TO FIGURE 4.2).

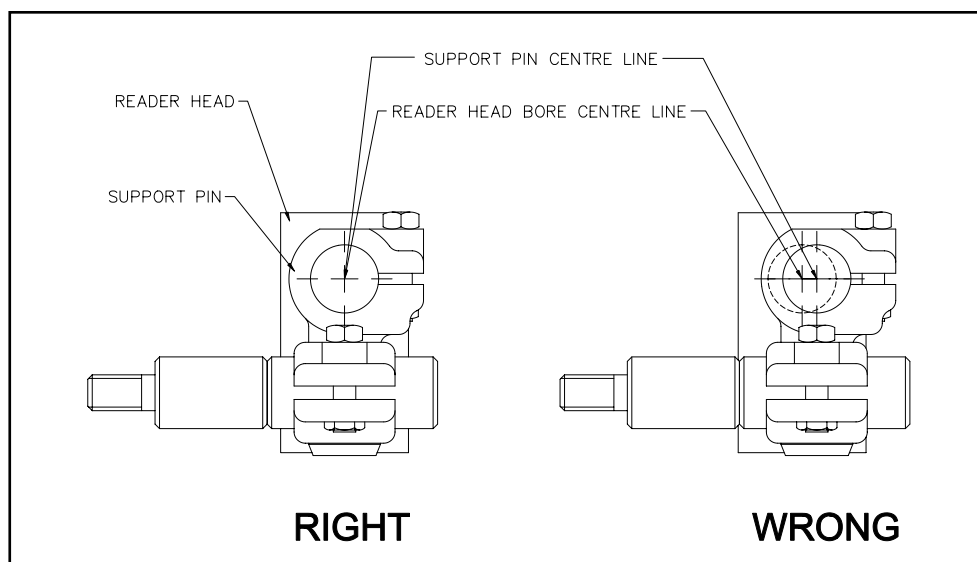


Figure 4.2 - Reader head and bracket alignment

Remove the scale from the reader head and traverse the machine to its full extent in the **opposite direction**. Full extent means hand winding past electrical limits.

Assemble the scale support link to the scale support pin leaving approximately 3mm (1/8") gap between the bottom of the pin shoulder and the top of the link.

Slide the link/pin assembly onto the scale making certain that there is sufficient clearance between the reader head and the support link to prevent damage to the reader head cable. Do not secure the support pin to the scale at this time.

Transfer punch through the support link and into the machine casting. It is important that the support link be kept square to its mounting surface at all times.

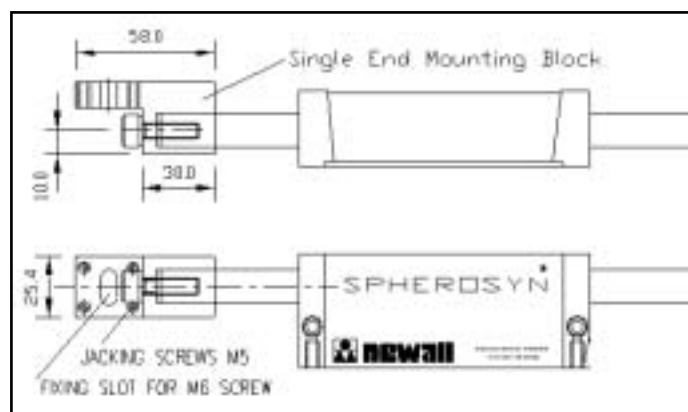


Figure 4.4 - Spherosyn™ single end mounting

4.3 Scales in Excess of 2.5 Meters

Traverse the machine to fullest extent of travel including hand winding past any electrical limits or trip dogs.

Insert the short blank length of Spherosyn™ tube into the reader head, allowing for a sufficient amount of scale to project from the Reading Head in order to fit the scale mounting brackets.

Assemble the angle bracket to the scale clamp (Refer to Figure 4.5). The jacking plate is included in each bracket kit, this will only be required if the machine mounting face is not a machined surface. Slide the assembly onto the scale allowing approximately 10mm clearance from the end of the reader head.

Mark the position of the jack plate (if required) or the angle support bracket. Drill and tap the necessary fixing holes and assemble the bracket to the machine.

Remove the blank tube and the bracket assembly from the reader head. Drill and tap M8 x 18mm (USA 5/16 - 18 x 3/4") fixing holes. Fit the jack plate (if required) and secure to the machine. Assemble the scale clamp and the angle bracket to the jack plate but do not secure. Traverse the reader head as near to the bracket assembly as possible. Slide the blank tube through the reader head into the scale clamp. Adjust the brackets into position and carefully tighten the screws. Check that the blank tube slides through the reader head and into the scale clamp smoothly without any fouling or interruption.

Remove the blank tube and traverse the machine to the full extent in the opposite direction. Remember the "full extent" is the absolute maximum travel up to the mechanical "dead stops."

Check the overall length of the actual scale and measure from the outside edge of the scale clamp already fitted to the machine and mark the position of the scale on to the machine.

Slide the Spherosyn™ blank tube into the reader head, assemble the remaining scale bracket assembly including the jacking plate (if required) and slide onto the tube.

Set the outside edge of the scale clamp level with the mark that indicates the overall length of the Spherosyn™ scale and mark the fixing position for the bracket assembly.

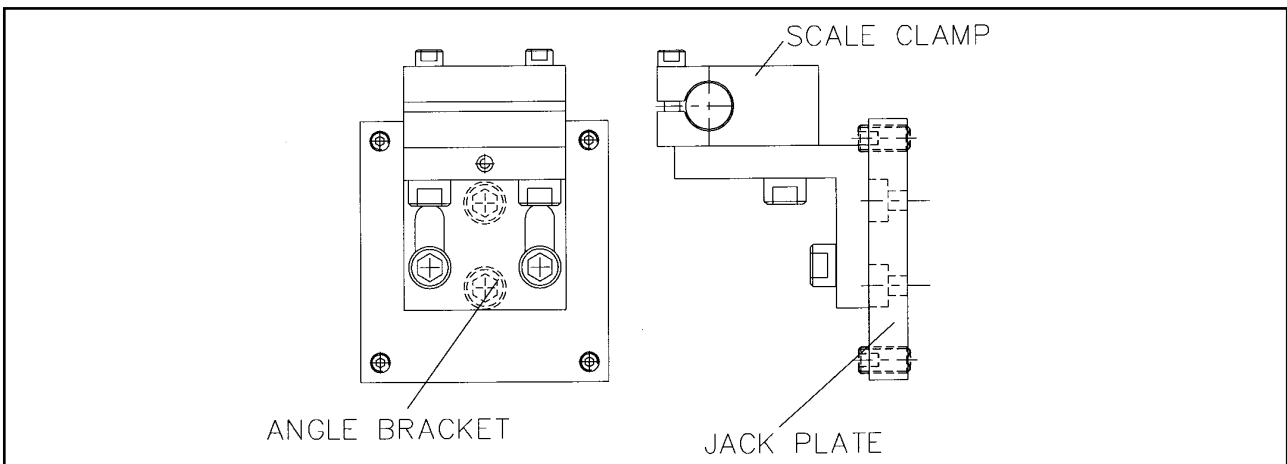


Figure 4.5 - Long scale support bracket assembly

For scales which are mounted in the horizontal position, spring loaded scale supports are included and should be positioned according to Table 1.

Once the locations for the supports have been determined, the Spherosyn™ reader head should be positioned in the location where the first support is to be fitted. Assemble the support unit including the jack plate if required. Mark the position for the fixing screws, drill and tap (M8 for the jack plate or M6 for the angle bracket). Ensure that the angle bracket has sufficient movement utilizing the two slots to allow for adjustment in the vertical plane. It is **important** that the top face of the angle bracket is set to 58.5mm (2.3") from the bottom machined face on the Spherosyn™ reader head.

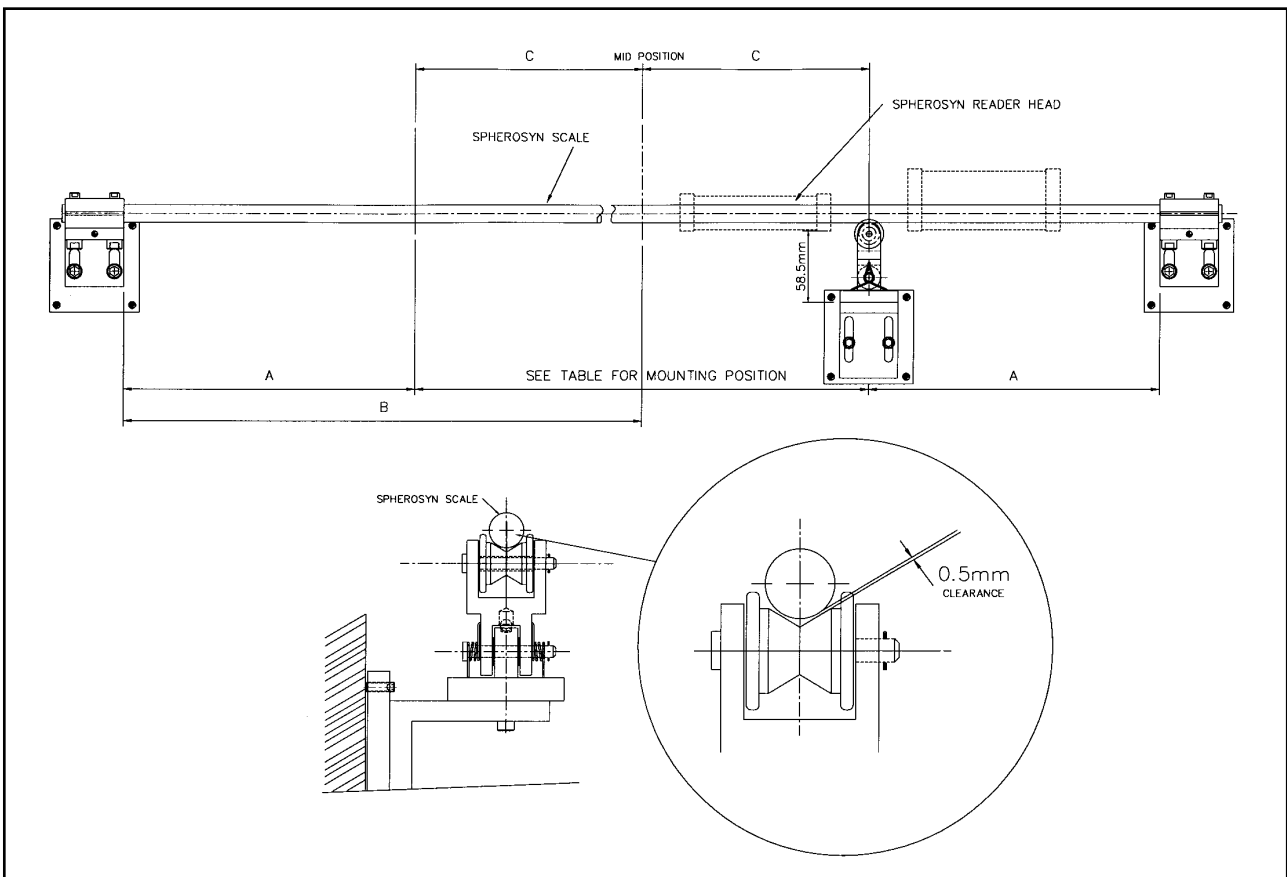


Figure 4.6 - Spherosyn™ long scale mounting and support details

Length	No. of Scale Supports	FROM FIXING BRACKET		Mid Position of Travel (B)	Left Side Position of Travel (C)	Right Side Position of Travel (C)
		Left Side (A)	Right Side (B)			
2500mm	2	850mm	850mm	-	-	-
3000mm	2	1100mm	1100mm	-	-	-
3500mm	2	1350mm	1350mm	-	-	-
4000mm	2	1500mm	1500mm	-	-	-
4500mm	3	1125mm	1125mm	2250mm	-	-
5000mm	3	1250mm	1250mm	2500mm	-	-
5500mm	3	1350mm	1350mm	2750mm	-	-
6000mm	3	1500mm	1500mm	3000mm	-	-
6500mm	4	1300mm	1300mm	-	650mm	650mm
7000mm	4	1400mm	1400mm	-	700mm	700mm
7500mm	4	1500mm	1500mm	-	750mm	750mm
8000mm	4	1600mm	1600mm	-	800mm	800mm
8500mm	5	1410mm	1410mm	4250mm	1410mm	1410mm
9000mm	5	1500mm	1500mm	4500mm	1500mm	1500mm
9500mm	5	1580mm	1580mm	4750mm	1580mm	1580mm
10000mm	6	1420mm & 2840mm	1420mm & 2840mm	-	710mm	710mm
10500mm	6	1500mm & 3000mm	1500mm & 3000mm	-	750mm	750mm
11000mm	6	1570mm & 3140mm	1570mm & 3140mm	-	785mm	785mm

Table 1

5.0 FITTING THE SCALE GUARD

Each encoder includes a protective guard. This aluminium guard is intended to protect the scale from impact damage. The guard can be attached to the machine casting or by means of the scale support pillars (Refer to Figure 5.1).

To fit the guard to the support pillars, measure and mark off the distance between the center of each pillar. Drill two 8.5mm (3/8") holes at either end of the guard. The guard can be attached to the pillars using the button head screws provided. After the guard is attached, move the machine axis to both extents of its travel. Ensure that the guard does not interfere with or rub against the reader head.

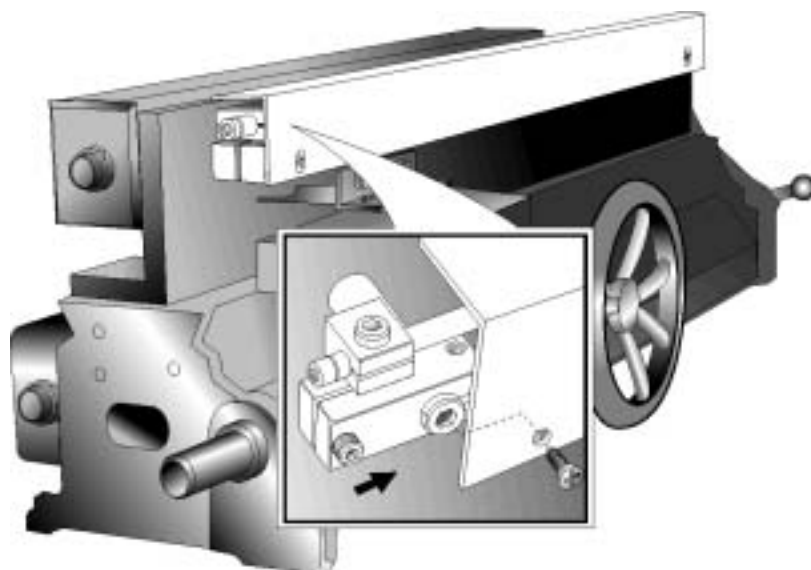


Figure 5.1 - Fitting the scale guard (example shown using a Spherosyn™ scale)

6.0 CABLE ROUTING

The most important and the most over looked aspect of fitting the linear encoder is proper cable routing. Dangling and loose cables can be snagged or broken causing irreparable damage. Care should be taken in order to ensure that the cables are secured to the machine and that cable loops do not interfere with any part of the machine or the linear encoder movements. "P" clips and thread forming screws are provided to route the cables from the reader head to the digital readout unit.

Note: The armored cable is an integral part of the reader head. If the cable becomes damaged, then it would have to be replaced complete with the reader head.

If extension cables are used, do not allow the plug and socket junction to lie in the swarf tray or in the direct flow of coolant or oil.

In order to avoid problems associated with electrical noise and interference, do not allow the cables to lie across electrical motors, fuse boxes or electrical pumps.

7.0 FINAL CHECK

Prior to putting the linear encoder into operation, slowly traverse the machine axis to both extents of its travel checking at all times that the cables are secure and that machine over travel cannot occur. Newall will not accept responsibility for linear encoder malfunction caused by over travel or damaged cables.

Appendix A - SCALE BRACKET MOUNTING OPTIONS

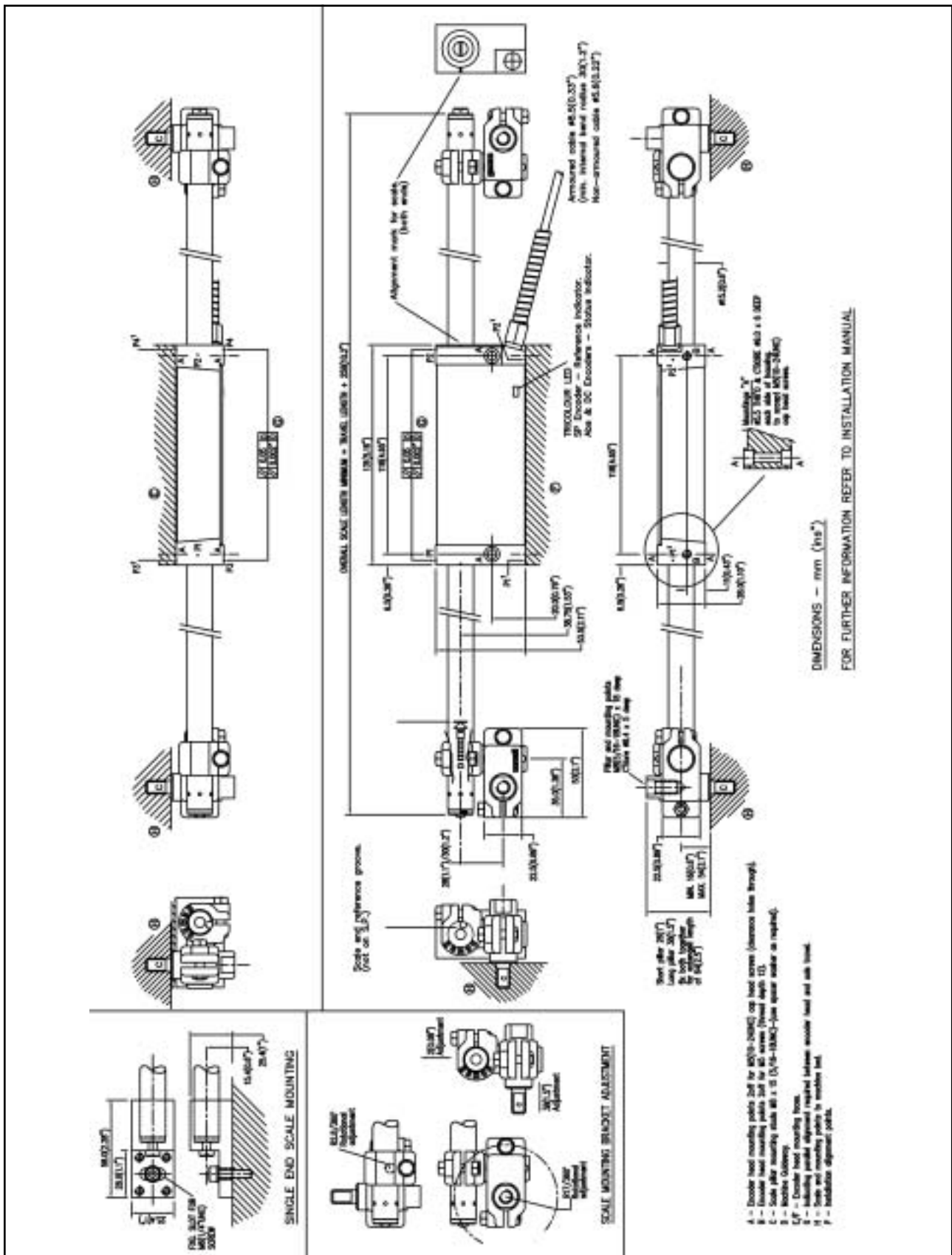


Outboard Scale Support Mounting



Scale Supports Inverted

Appendix B - DIMENSIONAL DRAWING



Appendix B - DIMENSIONAL DRAWING

