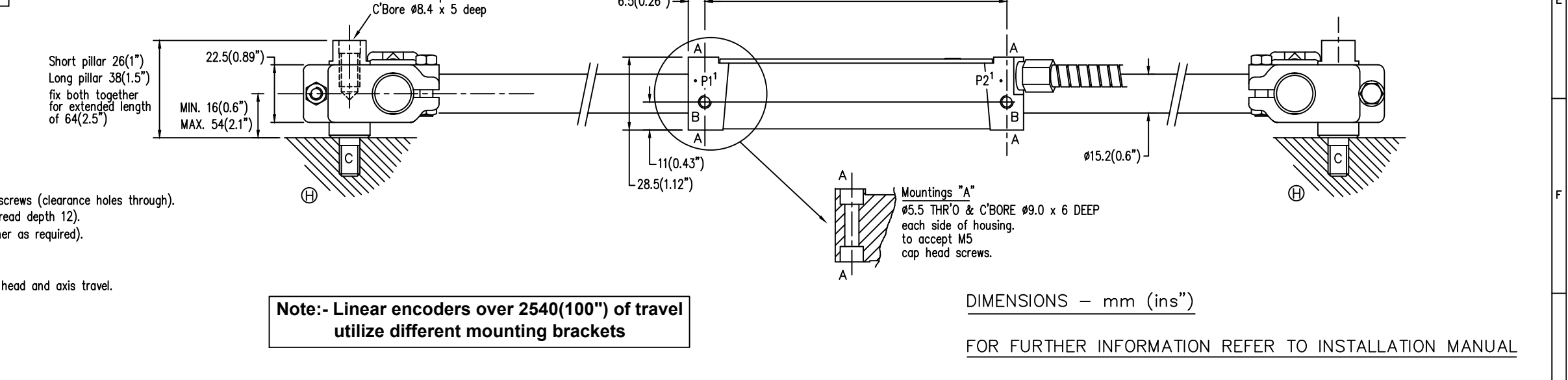


- A - Encoder head mounting points 2off for M5 cap head screws (clearance holes through).
- B - Encoder head mounting points 2off for M5 screws (thread depth 12).
- C - Scale pillar mounting studs M8 x 15 (use spacer washer as required).
- D - Machine Guideway.
- E/F - Encoder head mounting faces.
- G - Indicating parallel alignment required between encoder head and axis travel.
- H - Scale end mounting points to machine bed.
- P - Installation alignment points.



| | | | | | | | | | | | | | |
|-----------|----------|---------|---|-----------|------|---------|------------|--|-------------------------|------------------|---------|----------------------------|----------------------|
| REV. ISS. | DATE | C.N.No. | ALTERATION | REV. ISS. | DATE | C.N.No. | ALTERATION | TITLE | DIMENSIONAL DETAILS for | MATERIAL/ FINISH | SCALE | UNLESS OTHERWISE STATED :- | TOLERANCES:- |
| 4 | 03-12-14 | ECN9447 | MODELS COVERED BY DRAWING CHANGED DUE TO RELEASE OF SHG MK3 | CWH | | | | SHG-A and SHG-TC series encoders (<100") | | | (ON A1) | 0 DECIMAL PLACES ±0.5 | 1 DECIMAL PLACE ±0.2 |
| 3 | 27-11-13 | ECN9370 | IMPERIAL FIXINGS REMOVED, NOW METRIC ONLY | CWH | | | | | | | | 2 DECIMAL PLACES ±0.1 | ANGULAR ±1' |
| 2 | 29-9-06 | ECN8743 | DIMENSION CHANGE 28.5 WAS 28.0 (Width). RICK HARVEY. | JFD | | | | | | | | | |
| 1 | 13-1-04 | ECN8476 | UPDATED WITH VARIOUS MODS./CORRECTIONS REF. RICK HARVEY. | JFD | | | | | | | | | |
| | | | | | | | | DRAWN | J.DRIVER | 27-01-04 | | | |
| | | | | | | | | CHECKED | | | | | |
| | | | | | | | | APPROVED | | | | | |
| | | | | | | | | Leicester NEWALL England | | | | | |
| | | | | | | | | THIS DRAWING IS THE PROPERTY OF NEWALL MEASUREMENT SYSTEMS LIMITED. THE INFORMATION THEREON MAY NOT BE COPIED OR USED WITHOUT WRITTEN PERMISSION | | | | | |
| | | | | | | | | | | | SHEET | DRAWING | REV. |
| | | | | | | | | | | | 1 OF 1 | NUMBER | ISS. |
| | | | | | | | | | | | | 316-81650 | 4 |