

RDW-PV Draw Wire Encoder



Made in USA

Encoder for Spindle Axis of Boring Mill

It can often be difficult to install a linear encoder to the spindle axis of a machine tool. With the RDW-PV, attach the wire to the spindle assembly and mount the encoder to the machine surface. The RDW-PV can be used with Newall's DP1200 or SA-100 DRO units to provide accurate and reliable measurements even in harsh environments.

Newall's RDW-PV linear cable encoder provides linear position in a rugged, easy-to-install package. Simply connect the cable to your moving member of the machine and secure the base to a fixed object (or vice versa).

The retractable cable is made of nylon coated stainless steel for ultimate strength, durability and long life. The RDW-PV's compact profile and ability to operate in harsh environments makes it a perfect solution for a variety of industrial applications.

Features:

- IP66 environmental rating. Ideal for wet, dirty, or even outdoor environments
- Simple and adaptable installation
- Linear guide way is not required
- Measuring range up to 125" (3175mm)
- Linear resolution to 0.0005"(0.01mm)
- Zero backlash coupling between integrated incremental encoder and drum

Electrical Specifications

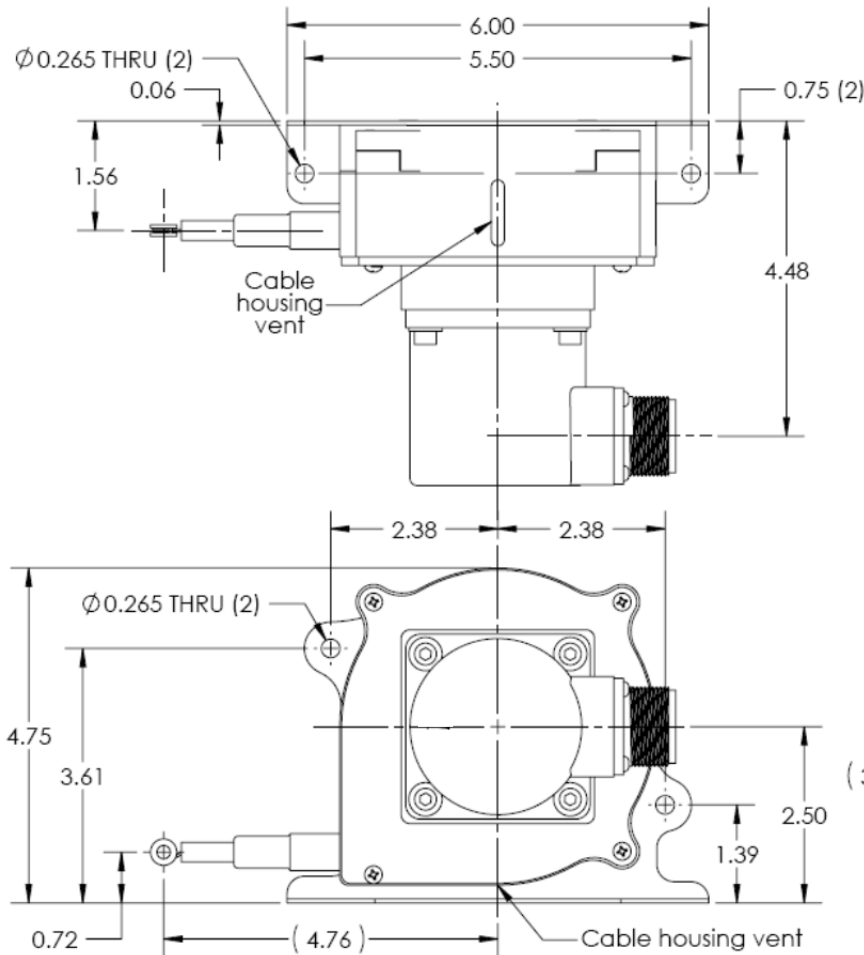
Code	Incremental
Supply Voltage	5-28 VDC
Output Format	2 channels in quadrature ½ cycle gated with negative B
Voltage/Output	Voltage out = Voltage In
Resolution	500 ppi
Current Req.	100mA typical+output load, 250mA max.
Output Termination	M18 Connector

Mechanical Specifications

Measuring Range	0-125"(0-3.175M)
Cable	Nylon Coated Stainless Steel
Maximum Velocity	80" (2M) per sec.
Cable Tension	24.8 +/- 30% oz (93.5g)
Enclosure IP Rating	IP66
Weight	Approx. 3.3 lbs (1.5Kg)
Mech. Life of Cable	At least 1.3 million cycles

For more detailed specifications, visit newall.com

Newall Measurement Systems Ltd., Technology Gateway, Leicester, LE18 4XH UK, Tel: +44 (0) 116 264 2730
 Newall Electronics Inc., 1803 O'Brien St., Columbus, Ohio 43228, USA, Tel: +1 614 771 0213
 web: www.newall.com email: sales@newall.com



EN 55011 and EN 61000-6-2

Measurements in inches

Ordering

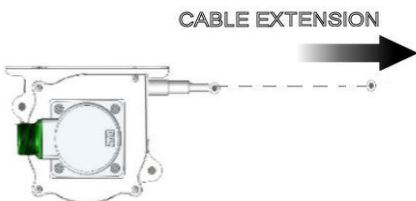
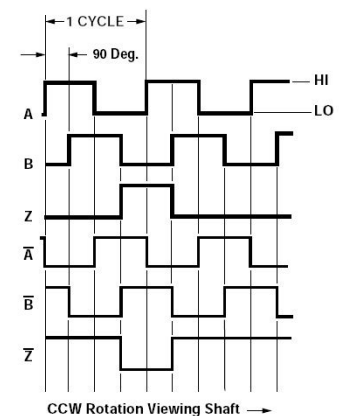
RDW-PV Encoder
 10' (3M) M18 Cable
 20' (6M) M18 Cable
 30' (9M) M18 Cable
 50' (15M) M18 Cable

Part Number
 RDWPV500A
 ELDM180030FL1
 ELDM180061FL1
 ELDM180009FL1
 ELDM180152FL1

Output Termination

M18 Connector	
PIN	CHANNEL
A	A
B	B
C	Z
D	+V
E	----
F	0V
G	CG
H	A/
I	B/
J	Z/

Output Waveform



A leads B for cable extension
 B leads A for cable retraction

Specifications subject to change without notice.